

AOS01 + COPPO

ANCHOR POINT FOR ROOFS WITH FAUX TILES

FAST

Easy installation because it is configured as a single plate.

COMPLETE

The package includes fasteners and cellular rubber gaskets, to ensure waterproofing.

EN
795:2012
A

CEN/TS
18418:2013

UNI
11578:2015
A



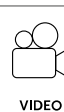
MAXIMUM NUMBER OF USERS



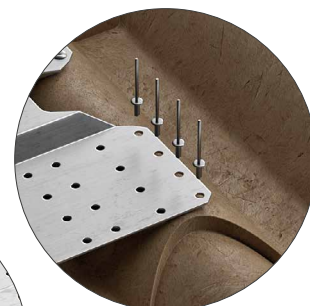
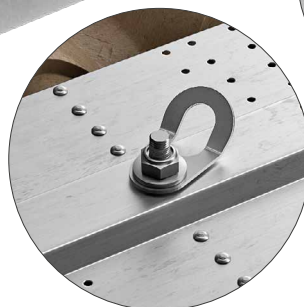
LOAD DIRECTION



TYPES OF APPLICATION



INCLUDED IN THE PACKAGE



TECHNICAL DATA*

substructure	minimum thickness	fastening systems included	substructure	minimum thickness	fastening systems included
Fe	0,5 mm	rivet 6,3 x 20,2 mm with EPDM washer (x 24)	Al	0,7 mm	rivet 6,3 x 20,2 mm with EPDM washer (x 24)

* The values indicated are the result of experimental tests carried out under the supervision of third parties in accordance with the standards referred to. For a correct calculation report with minimum distances according to the standard requirements, the substructure must be checked by a qualified engineer before installation.

COPPO | CODES AND DIMENSIONS

CODE	material		B [mm] [in]	H [mm] [in]	L [mm] [in]	pcs	
COPPO	AISI 304 stainless steel grade 1.4301	A2 AISI 304	420 16 9/16	65 2 9/16	322 12 11/16	1	
AOS01	AISI 304 stainless steel grade 1.4301	A2 AISI 304	60 2 3/8	-	98 3 7/8	1	