

TBS EVO C5

FLANGE HEAD SCREW



C5 ATMOSPHERIC CORROSIVITY

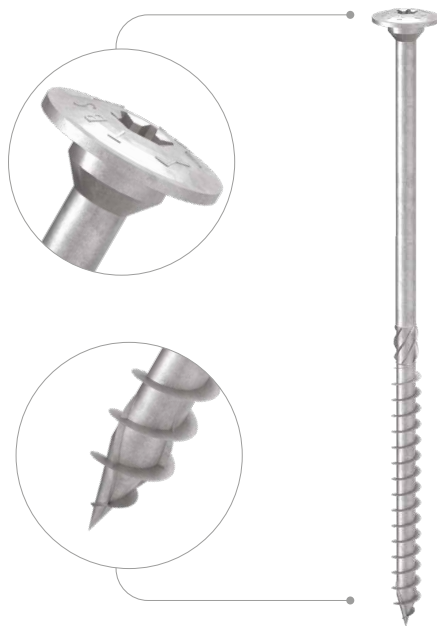
Multi-layer coating capable of withstanding outdoor environments classified C5 according to ISO 9223. SST (Salt Spray Test) with exposure time greater than 3000h carried out on screws previously screwed and unscrewed in Douglas fir timber.

MAXIMUM STRENGTH

It is the screw of choice when high mechanical performance is required under very adverse environmental and wood corrosive conditions. The wide head provides additional tensile strength, which is ideal in the presence of wind or variations in timber dimensions.

3 THORNS TIP

Thanks to the 3 THORNS tip, minimum installation distances are reduced. More screws can be used in less space and larger screws in smaller elements. Costs and time for project implementation are reduced.



MANUALS



BIT INCLUDED

DIAMETER [in]

0.24 **0.32** 0.63

LENGTH [in]

1 9/16 **2 3/8** 9 1/2 39 3/8

EXPOSURE CONDITION

EC1 EC2 EC3

ATMOSPHERIC CORROSIVITY

C1 **C2** C3 C4 C5

WOOD CORROSIVITY

T1 T2 T3 T4

MATERIAL

C5
EVO
COATING

carbon steel with C5 EVO coating with very high corrosion resistance



FIELDS OF USE

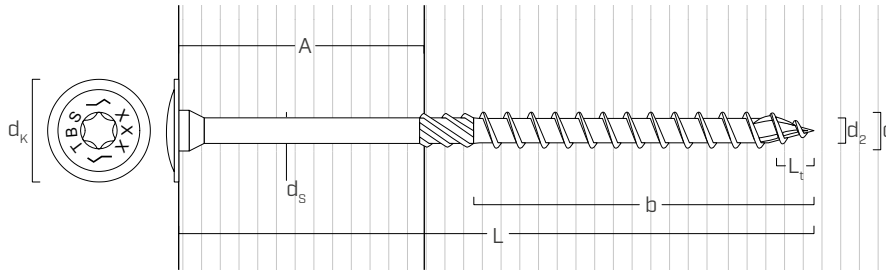
- timber based panels
- solid timber and glulam
- CLT and LVL
- high density woods

CODES AND DIMENSIONS

d ₁ [mm] [in]	CODE	L		b		A	pcs
		[mm]	[in]	[mm]	[in]		
6 0.24 #14 TX 30	TBSEVO660C5	60	2 3/8	40	1 9/16	3/4	100
	TBSEVO680C5	80	3 1/8	50	1 15/16	1	100
	TBSEVO6100C5	100	4	60	2 3/8	1 1/2	100
	TBSEVO6120C5	120	4 3/4	75	2 15/16	1 3/4	100
	TBSEVO6140C5	140	5 1/2	75	2 15/16	2 1/2	100
	TBSEVO6160C5	160	6 1/4	75	2 15/16	3 1/4	100
	TBSEVO6180C5	180	7 1/8	75	2 15/16	4	100
	TBSEVO6200C5	200	8	75	2 15/16	4 3/4	100

d ₁ [mm] [in]	CODE	L		b		A	pcs
		[mm]	[in]	[mm]	[in]		
8 0.32 TX 40	TBSEVO8100C5	100	4	52	2 1/16	1 3/4	50
	TBSEVO8120C5	120	4 3/4	80	3 1/8	1 1/2	50
	TBSEVO8140C5	140	5 1/2	80	3 1/8	2 1/4	50
	TBSEVO8160C5	160	6 1/4	100	4	2 1/4	50
	TBSEVO8180C5	180	7 1/8	100	4	3	50
	TBSEVO8200C5	200	8	100	4	3 3/4	50
	TBSEVO8220C5	220	8 5/8	100	4	4 1/2	50
	TBSEVO8240C5	240	9 1/2	100	4	5 1/2	50

GEOMETRY



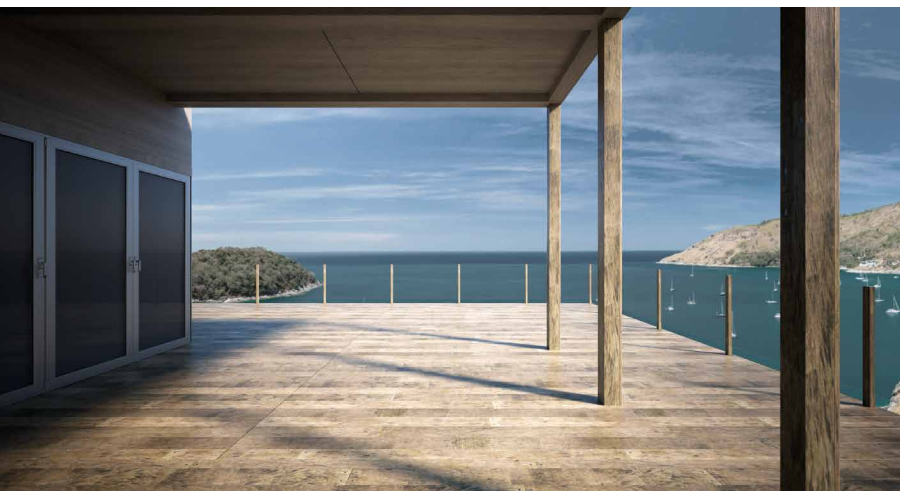
Nominal diameter	d ₁	[in] ⁽¹⁾	0.24	0.32
Outer thread diameter	d ₁	[mm]	6	8
		[in]	0.236	0.315
Head diameter	d _k	[in]	0.610	0.748
Root diameter	d ₂	[in]	0.156	0.213
Shank diameter	d ₅	[in]	0.169	0.228
Tip length	L _t	[in]	0.236	0.315
Pre-drilling hole diameter ⁽²⁾	d _{V,G≤0.55}	[in]	5/32	13/64
Pre-drilling hole diameter ⁽³⁾	d _{V,G>0.55}	[in]	5/32	15/64

⁽¹⁾The nominal diameter of the screw is converted into imperial units and rounded up to the nearest decimal point.

⁽²⁾Pre-drilling applies to timber with G≤0.55 (optional).

⁽³⁾Pre-drilling applies to timber with G>0.55 (required).

For minimum distances and structural values see TBS on page 88.



LIGHT FRAME & MASS TIMBER

The extensive size range allows a wide variety of applications: from timber frame and trusses to the joining of engineered timber such as LVL and CLT, in the aggressive environments that characterise atmospheric class C5.