

# KKT A4 | AISI316



## CONE-SHAPED CONCEALED HEAD SCREW

### AGGRESSIVE ENVIRONMENTS

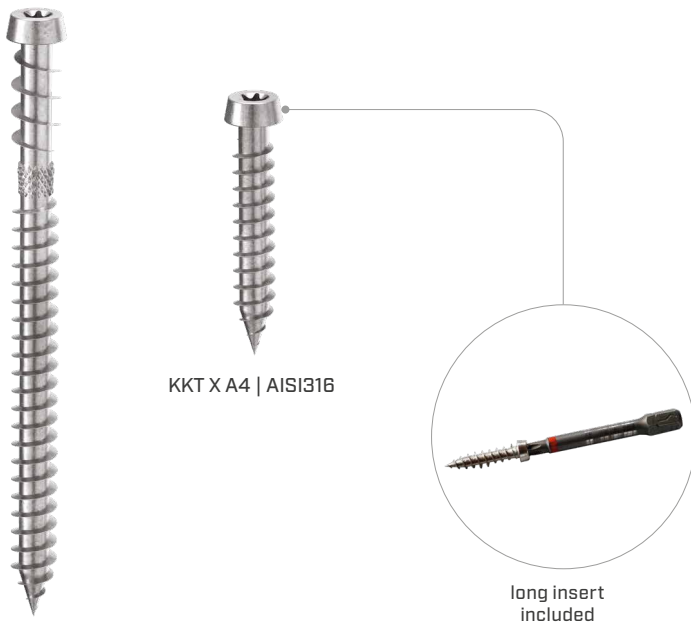
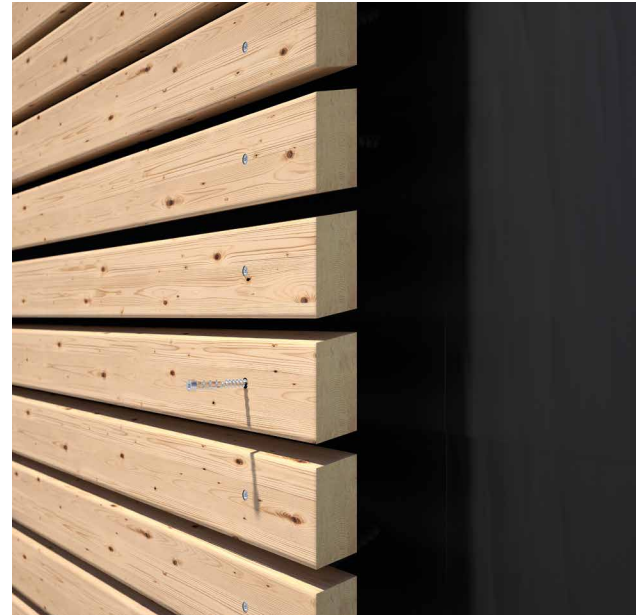
A4 | AISI316 stainless steel version ideal for very aggressive environments, for acidic, chemically treated wood and very high internal moisture (T5). KKT X version with short length and long bit for use with clips.

### COUNTER THREAD

The inverse (left-hand) under-head thread guarantees excellent grip. Small conical head to ensure it is hidden in the timber.

### TRIANGULAR BODY

The three-lobed thread makes it possible to cut the wood grain during screwing. Exceptional timber pull-through.



KKT A4 | AISI316

KKT X A4 | AISI316

long insert included



#### DIAMETER [in]

0.14  0.21  0.32

#### LENGTH [in]

1 3/16  1 3/8  1 5/8  12 5/8

#### EXPOSURE CONDITION



#### ATMOSPHERIC CORROSIVITY



#### WOOD CORROSIVITY



#### MATERIAL

**A4** AISI 316 A4 | AISI316 austenitic stainless steel (CRC III)




## FIELDS OF USE


Outdoor use in highly aggressive environments. Wooden boards with density of <math>< 550 \text{ kg/m}^3</math> [ $G = 0.63$ ] (without pre-drill) and <math>< 880 \text{ kg/m}^3</math> [ $G = 1.05$ ] (with pre-drill). WPC boards (with pre-drill).

## CODES AND DIMENSIONS

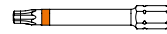
### KKT A4 | AISI316

	$d_1$	CODE	L		b		A	pcs
	[mm] [in]		[mm]	[in]	[mm]	[in]	[in]	
	5,1 0.21 #11 TX 20	KKT540A4	43	1 11/16	25	1	3/4	200
		KKT553A4	53	2 1/16	35	1 3/8	3/4	200
		KKT560A4	60	2 3/8	40	1 9/16	1	200
		KKT570A4	70	2 3/4	50	1 15/16	1	100
		KKT580A4	80	3 1/8	53	2 1/16	1 1/4	100

### KKT X A4 | AISI316 - fully threaded screw

	$d_1$	CODE	L		b		A	pcs
	[mm] [in]		[mm]	[in]	[mm]	[in]	[in]	
	5,1 0.21 #11 TX 20	KKT520A4(*)	20	13/16	16	5/8	3/16	200
		KKT525A4(*)	25	1	21	13/16	3/16	200
		KKT530A4(*)	30	1 3/16	26	1 1/32	3/16	200
		KKT540A4	40	1 9/16	36	1 7/16	3/16	100

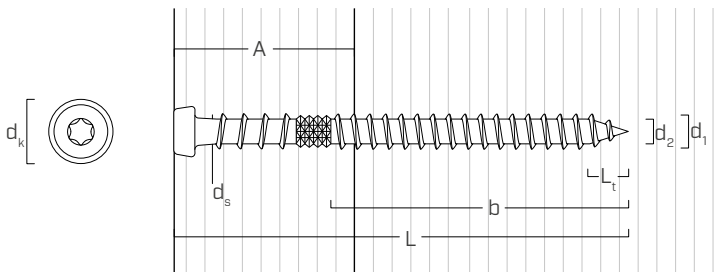
(\*)Not holding CE marking.



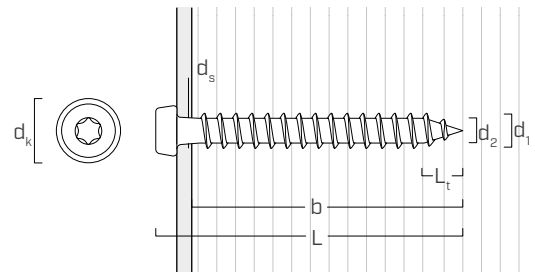
LONG BIT INCLUDED code TX2050

## GEOMETRY

KKT A4 | AISI316



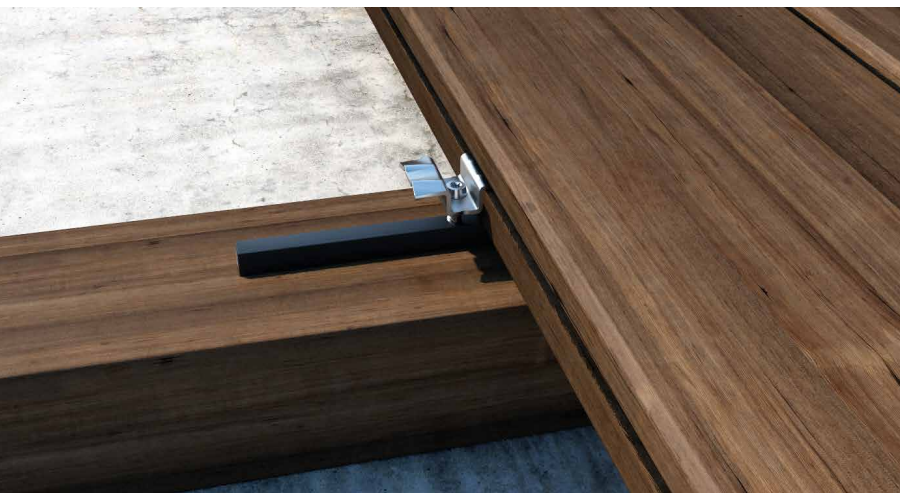
KKT X A4 | AISI316



Nominal diameter	$d_1$	[in] <sup>(1)</sup>	0.21
		[mm]	5,1
Outer thread diameter	$d_1$	[in]	0.201
Head diameter	$d_k$	[in]	0.266
Root diameter	$d_2$	[in]	0.134
Shank diameter	$d_s$	[in]	0.159
Tip length	$L_t$	[in]	0.201
Pre-drilling hole diameter <sup>(2)</sup>	$d_v$	[in]	1/8 - 9/64

<sup>(1)</sup>The nominal diameter of the screw is converted into imperial units and rounded up to the nearest decimal point.

<sup>(2)</sup>For high density materials, pre-drilled holes are recommended based on the wood species.



### KKT X

Ideal for fastening standard Rothoblaas clips (TVM, TERRALOCK) in outdoor environments. Long bit included in each package.