

TIE-BEAM STRIPE

TIE BEAM SEALING PROFILE

ADAPTABLE

Flexible profile is easy to work, thanks to the soft and shapeable mix. Guarantees simple installation and perfect adherence to any surface.

WATERPROOF

Ideal for durable connections between girders and masonry or concrete, offering excellent resilience and ensuring reliable, lasting waterproof protection.



TECHNICAL DATA

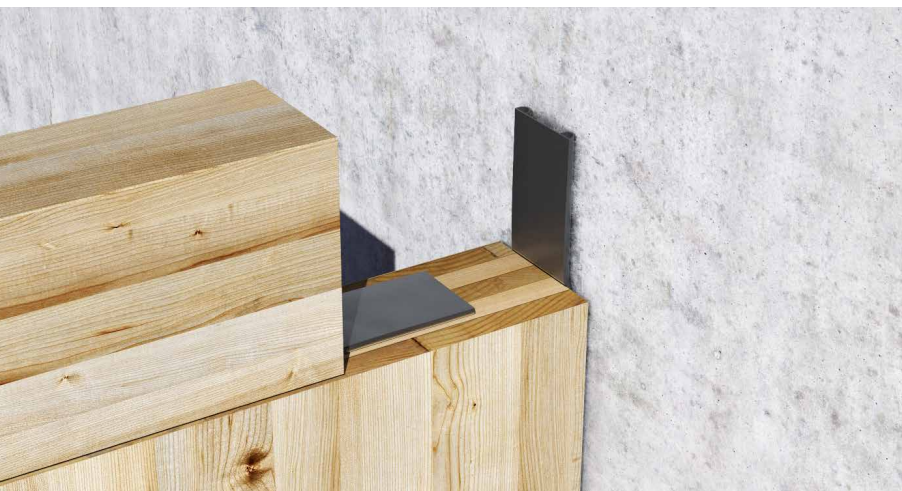
Properties	standard	value	USC units
Material	-	Extruded compact EPDM	-
Shore A hardness	EN ISO 868	50	-
Density	ISO 2781	1,1 g/cm ³	0.6 oz/in ³
Breaking load	EN ISO 37	≥ 9 Mpa	≥ 1.3 oz/in ²
Elongation at break point	EN ISO 37	≥ 500%	-
Compression deformation (70h, +100°C)	EN ISO 815	< 50%	-
Application temperature	-	-40/+90 °C	-40/+194 °F
Resistance to temperature	-	-40/+100 °C	-40/+212 °F
Storage temperature ⁽¹⁾	-	+5/+25 °C	+41/+77 °F
Solvents	-	no	-

⁽¹⁾Store the product in a dry, covered location.

Waste classification (2014/955/EU): 17 02 03.

CODES AND DIMENSIONS

CODE	B	s	L	B	s	L	
	[mm]	[mm]	[m]	[in]	[mil]	[ft]	
TIEBEAM71	71	9	50	2.8	354	164	1



SMART

The pre-formed profile adapts well to surfaces, ensuring air and water tightness at all times. Its versatility also allows vertical use for sealing between walls.

STRENGTH

Its profile ensures great elasticity and resistance even in the event of perforations and mechanical fastening thanks to the special modified EPDM compound.